

# Memo

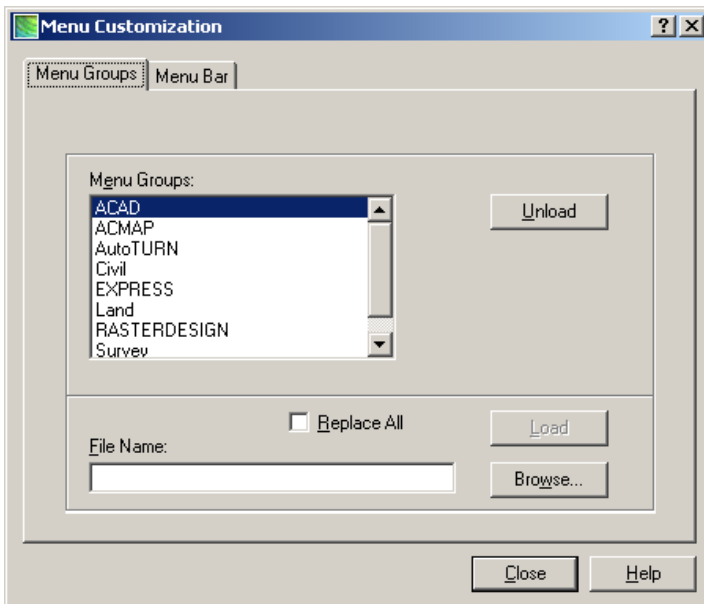
To: All CAD Users  
From: Tom Hanley  
Date: 2/15/05  
Re: Custom Menu #2 Routines

---

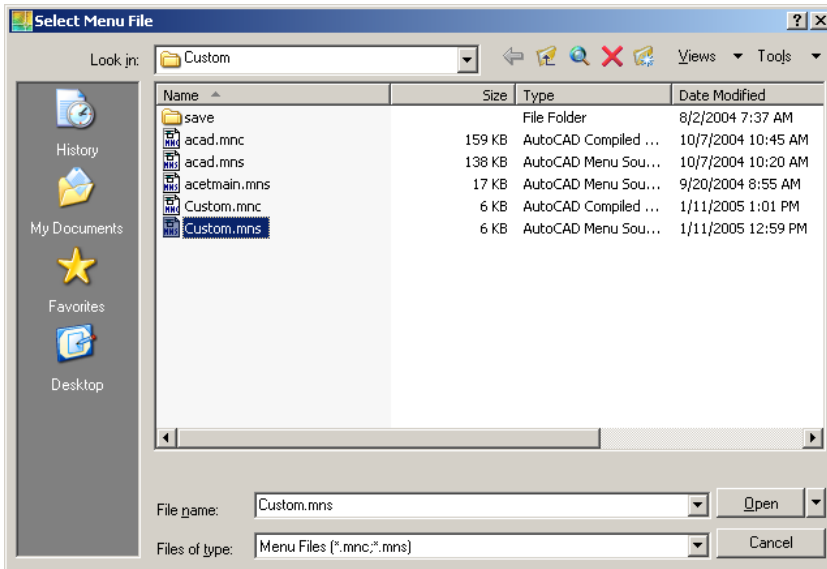
## AutoCAD Custom Menu Toolbar #2



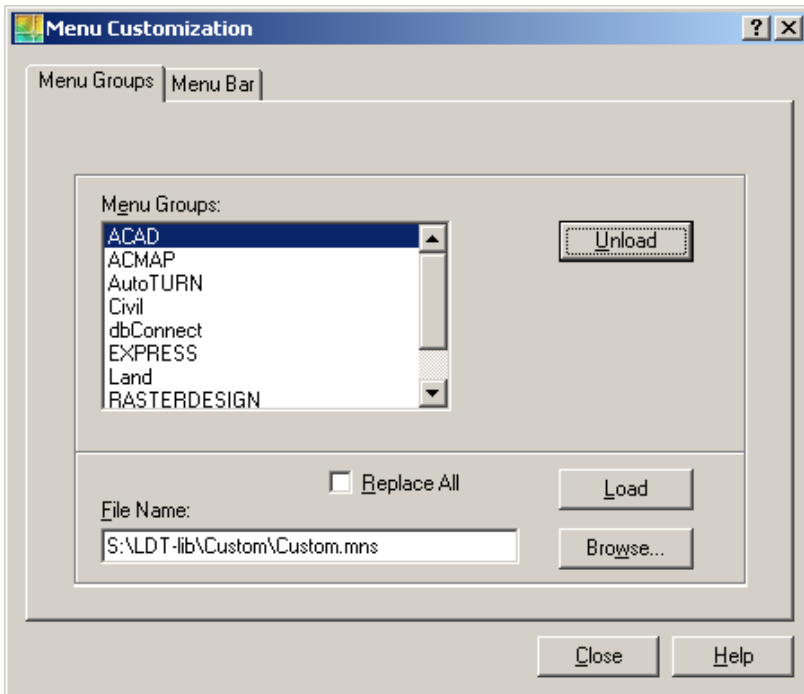
Our Lanc & Tully custom menu has been available for quite awhile. It has been recently changed to add some additional lisp routines. If you have the custom menu loaded, this toolbar is available as well. If you need to load this menu, you type **MENULOAD** at the AutoCAD command prompt.



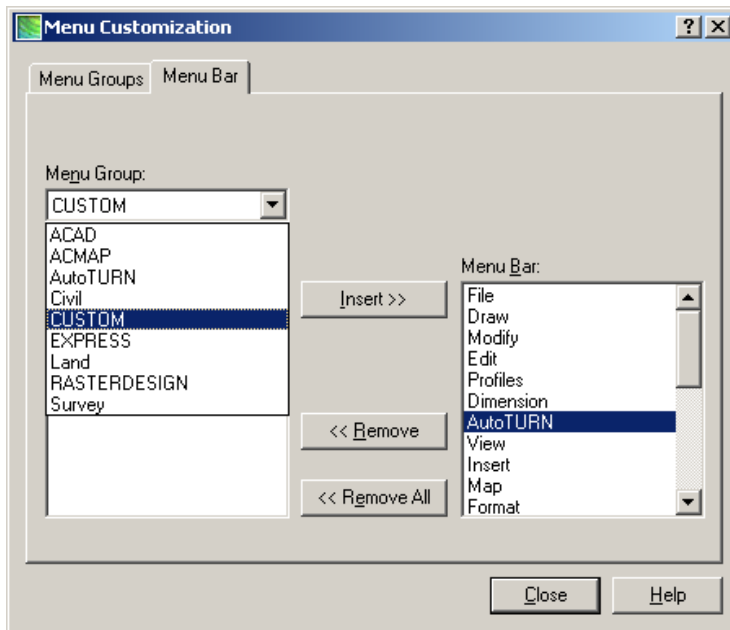
Click on **Browse** to navigate to **S:\LDT-lib\Custom** folder and select **Custom.mns**.



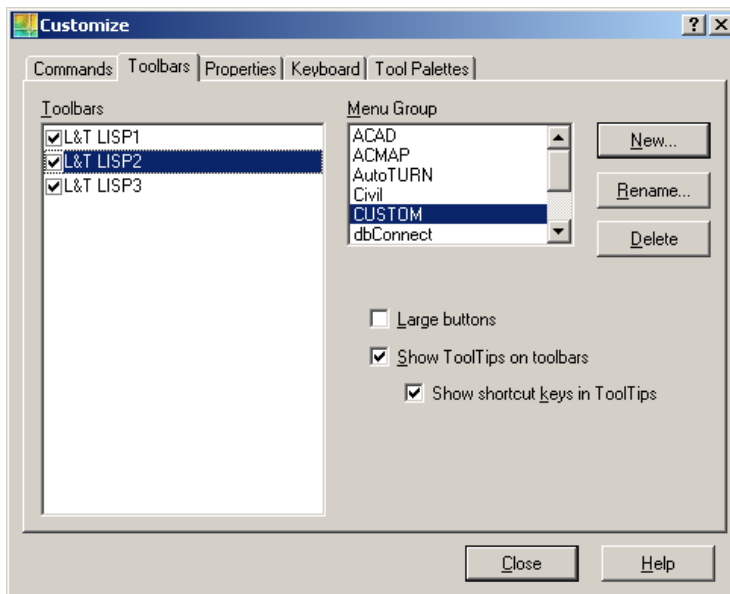
Click **Open** to select the menu file.



The file name should now appear in the above dialog box and the **Load** button will become available. Click on the **Load** button. This will load the Custom menu into the available **Menu Groups**. Select the **Menu Bar** tab at the top of the dialog box to flip to that dialog box page.













Select the **CUSTOM** menu in the **Menu Group** window then choose the **Menu Bar** item the you want the CUSTOM menu to appear *BEFORE*. Click **Insert** to place the Custom menu into your pull-down menus. You can now **Close** this window and your CUSTOM menu should be where you wanted to position it in the pull-downs. If you notice some pull-down menus are dropping off the next time you load AutoCAD, it is because there is a 24 pull-down menu items limit.



Right mouse click on any AutoCAD tool bar will show a drop-down menu where **Customize** is at the bottom. Left mouse click on **Customize** which will open the Customize dialog box. Select **CUSTOM** in the **Menu Group** window and check **L&T LISP2** in the **Toolbars** window. Click **Close** to place the Custom toolbar on your AutoCAD screen.

What do these custom routines do?

	<u>Layer Unisolate</u> – Added the Express Tools layer unisolate button that was left off the LDT2005 Express tools toolbar.
	<u>MTMASK</u> – Masks Mtext to L&T standards.
	<u>MTUNMASK</u> – Unmasks Mtext.
	<u>Texttofront</u> – New 2005 command to move text and/or dimensions to the front in display order.
	<u>FX</u> – Sizes Mtext box to the longest line of text.
	<u>Lengthen</u> – Added the Lengthen button which was left out off the LDT2005 acad modify toolbar.
	<u>Cookie Cutter</u> – Added the Express Tools Cookie Cutter button that was left off the LDT2005 Express tools toolbar.
	<u>Layer Filter Delete</u> – This command deletes all the layer filters that are automatically created when opening a Acad 2005 Drawing.
	<u>mplot</u> – This lisp routine is supposed to plot multiple layouts but is not yet working...
	<u>OCWA</u> – This routine is used to adjust the Orange County Water Authority Cad Data to the proper scale factor AFTER using the OCWA2LT layer translation.

If you need further explanation or have any problems loading this menu or toolbar, please let me know promptly.

Thank You,

Tom Hanley